

Violence to Self & Others is Preventable

MOVE FROM AWARENESS TO ACTION
WITH A PROACTIVE APPROACH TO
VIOLENCE PREVENTION



Navigate**360**

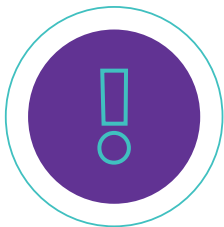
Building safer tomorrows.

Essential Truths Guide the Way

To effectively prevent suicide and targeted violence in schools, there are some essential truths to layout as a foundation for our efforts. When we know these truths, we can address them upstream through safety programs and initiatives designed to keep students on or redirect them to a safe path.

THE LINK BETWEEN MENTAL HEALTH & VIOLENCE

Though mental illness is not a determinant of violence, students who pose a threat to themselves or other do need mental health support.



TRUTH

Mental health needs alone are not a predictor of suicide or targeted violence.

Most students who have mental health needs do not pose a threat to themselves or others.



TRUTH

Students whose mental health needs go unmanaged are more likely to resort to violence.

Stigma, lack of resources, and lack of awareness can cause student mental health needs to go unmanaged.



TRUTH

Early detection, assessment and intervention are key.

Students who pose a threat to themselves or others must be identified early and provided with intervention and mental health support.



UNDERSTANDING STUDENT CONCERNS

Between national statistics and surveys of students, we can learn what’s on their minds which in turn helps us determine the type of upstream programs that will garner the most benefit.

TRUTH

More than half of 11-17-year-olds report having thoughts of suicide or self-harm.¹

TRUTH

Suicide is the 2nd leading cause of death among students 10 years old and up.²

TRUTH

More than 60% of youth with major depression do not receive any mental health treatment.³

TRUTH

The majority of teens worry a shooting or other act of violence could happen at their school.⁴

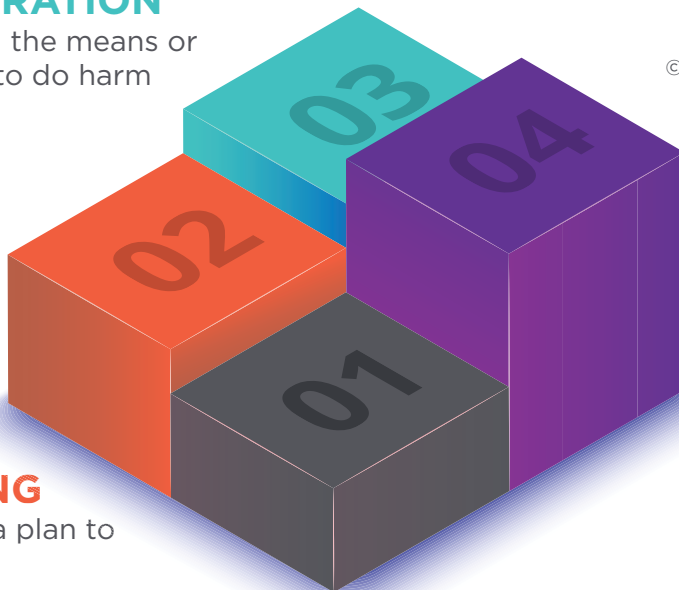
© G. Deisinger, Ph.D. & M. Randazzo, Ph.D.

VIOLENCE IS PREVENTABLE

A very important truth is that violence is preventable. People don’t just snap. In fact, they exhibit observable behaviors of their ideas and intentions and they follow a pathway. The goal for schools is to intervene early.

PREPARATION

Acquiring the means or capacity to do harm



PLANNING

Developing a plan to carry it out

IMPLEMENTATION

Carrying out the violent act

IDEATION

Establishing an idea to do harm

★ **EARLY IDENTIFICATION IS CRUCIAL!**

VIOLENCE IS PREVENTABLE

- + Schools should intervene immediately before a student's behavior warrants legal and/or other consequences.
- + Leakage occurs in nearly all cases of violence to self and/or others.
- + Students are in the best position to identify and report concerning behaviors displayed by their classmates.
- + Threat assessment, with robust interventions and support for students who are in distress and pose a threat, will greatly reduce violence.
- + There is a significant need for mental health identification, intervention, and management.

The Pillars of Violence Prevention

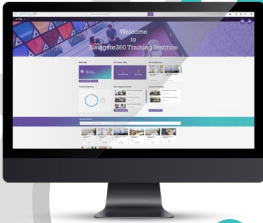
Taking the truths as a foundation of knowledge, we can build pillars to proactively address the needs and challenges, thus preventing student self-harm and targeted violence.

Truth	Pillar of Violence Prevention
There is a significant need for mental health identification, intervention, and management.	Evidence-based SEL and intervention curriculum provides proactive, ongoing education aimed at mental wellbeing.
Schools should intervene immediately before a student's behavior warrants legal and/or other consequences.	Teams need to be trained on a comprehensive approach to identifying and managing concerning behaviors.
Students are in the best position to identify and report concerning behaviors displayed by their classmates.	Anonymous tip reporting solutions must be easily accessible to students and the school community.
Leakage occurs in nearly all cases of violence to self and/or others.	Detect digital warning sign scanning helps schools identify potential concerns early.
Threat assessment, with robust interventions and support for students who are in distress and pose a threat, will greatly reduce violence.	Integrated Behavioral Threat & Suicide Case Management software helps schools assess, manage and document individuals who pose a threat of harm.

Content Authored & Presented by Experts

SEL & Restorative Curriculum

- + Students
- + Staff
- + Parents
- + Mental Health
- + Behavioral Intervention



Specific Staff Training

- + BTA Team Training
- + Suicide Prevention Training



Anonymous Tip Reporting



Digital Warning Sign Detection



Behavioral Threat & Suicide Case Management

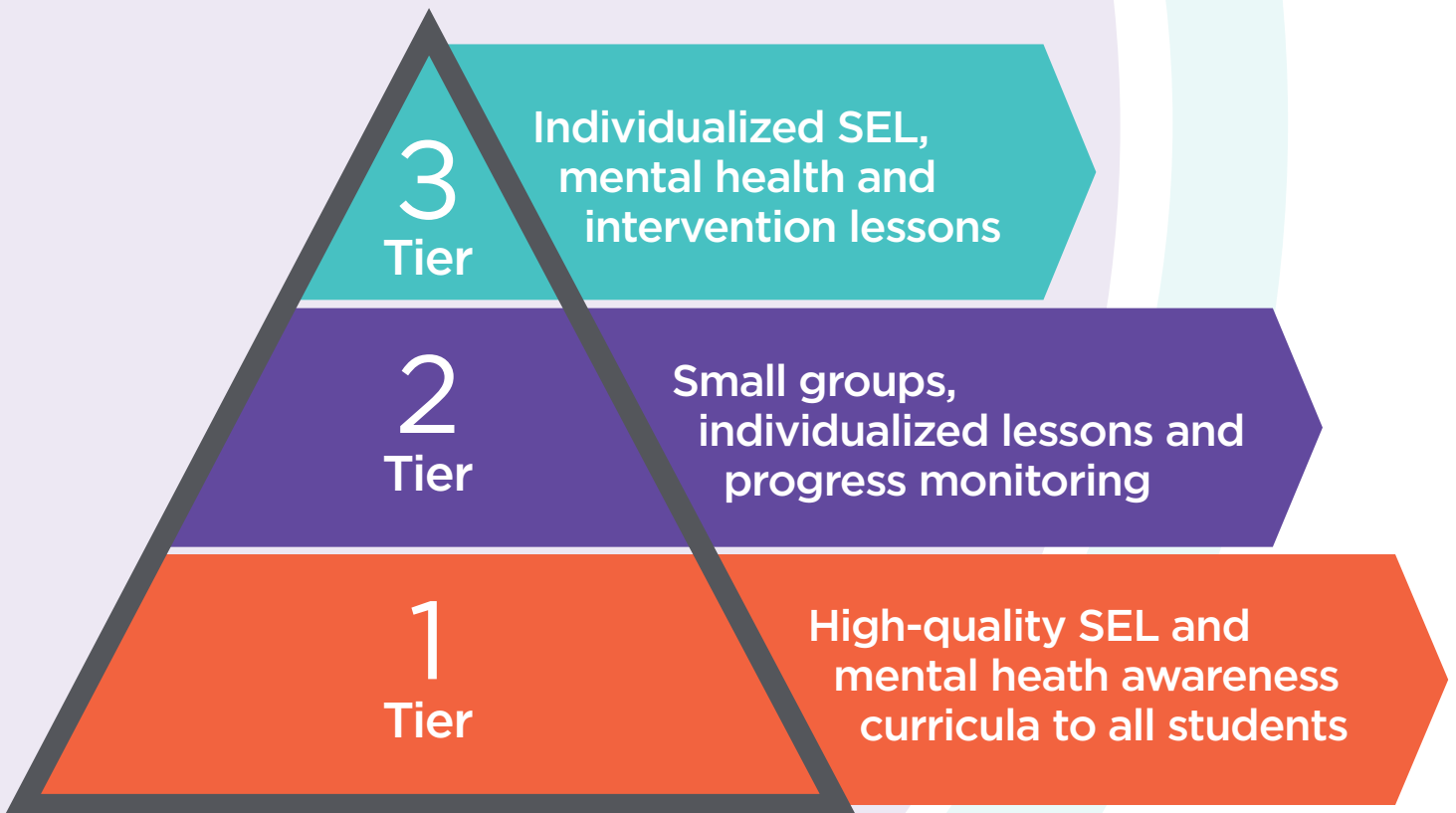
- + Proven BTA Models
- + Suicide Screening
- + Combined Case Management

Pillar 1:

PROACTIVE & INTERVENTION SEL CURRICULUM

A robust social-emotional learning (SEL) curriculum is an essential component to improving students' ability to manage their behavior and care for their mental wellbeing. Tiered instruction and corresponding SEL resources, including intervention curricula, are designed to meet the needs of students at all levels of support.

Navigate360's SEL for Mental Health and Prevention curricula offer lessons for students across grades K-12 to help them learn how to care for their mental wellbeing.





- + Navigate360's digital SEL curriculum meets the learning preferences of Gen Z & Alpha students by employing visually engaging content and technology via desktop, web and mobile app design.
- + The dynamic and expansive content library contains over 1800 lessons that are scaffolded by grade to present information on the current and growing challenges students face aligned to their developmental level.
- + All content is rooted in at least one of the five CASEL competencies.

Navigate360 SEL for Intervention provides lessons for a wide range of challenging behaviors and helps students learn from their actions. The healthiest and most effective way to address challenging behavior is to approach each incident as a learning opportunity and a positive exercise in empathy.



Interrupting the Pathway with Proven Strategies

When a student exhibits concerning behaviors well-trained individuals must respond immediately and initiate an assessment to quickly determine the level of the threat and the proper steps to be taken. Aligning your teams with training greatly improves your ability to support the student and help them toward a safer path.

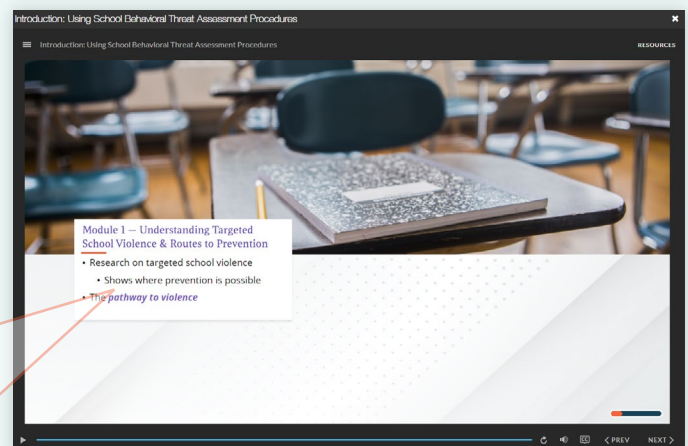
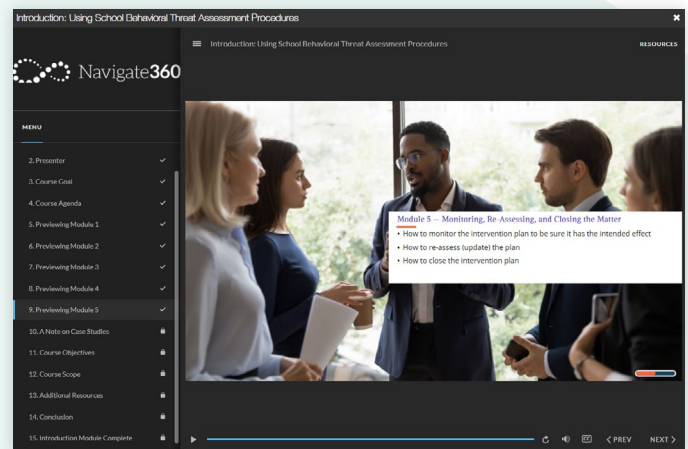
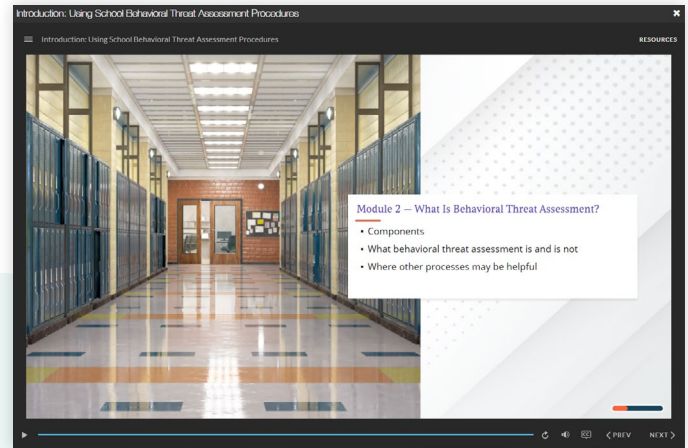
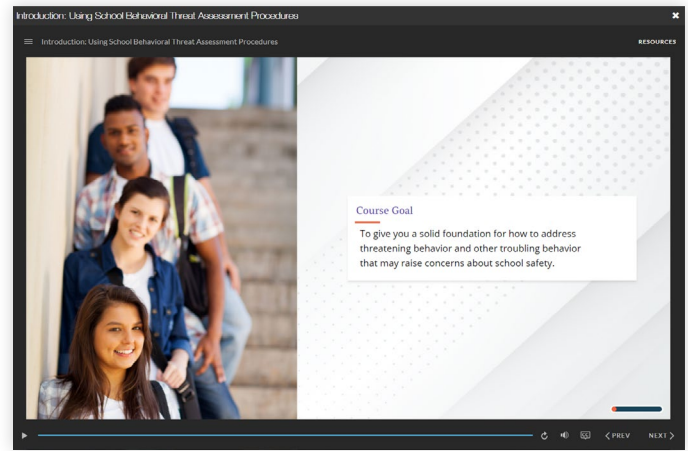
Pillar 2:

EXPERT TRAINING FOR SPECIFIC STAFF

Individuals involved in behavioral threat assessment teams and suicide prevention need specialized training to ensure a common understanding of school safety and evidence-based practices. They need comprehensive training with hands-on practice working together to determine the seriousness of a threat and create an appropriate safety plan.

Module 1 – Understanding Targeted School Violence & Routes to Prevention

- Research on targeted school violence
 - Shows where prevention is possible
- The *pathway to violence*



BEHAVIORAL THREAT ASSESSMENT TRAINING

Exclusively through Navigate360, you can provide the most comprehensive team training program that prepares your teams to implement either model – Comprehensive School Threat Assessment Guidelines (CSTAG) or National Threat Assessment Center (NTAC) with high fidelity.

Designed for today’s environment where time is a premium and flexibility is a must, this 2-part training program combines the best of both online and in-person (live or virtual) learning. Teams are qualified to begin using CSTAG or NTAC after completing both Level 1 and Level 2.



Dewey G. Cornell, Ph.D.

Area of Expertise
Behavioral Threat Assessment (CSTAG)

Find His Work Here

Behavioral Threat & Suicide Case Management platform
BTA Team Training



Marisa Randazzo, Ph.D.

Area of Expertise
Behavioral Threat Assessment (NTAC)

Find Her Work Here

Behavioral Threat & Suicide Case Management platform
BTA Team Training



Scott Poland, Ed.D.

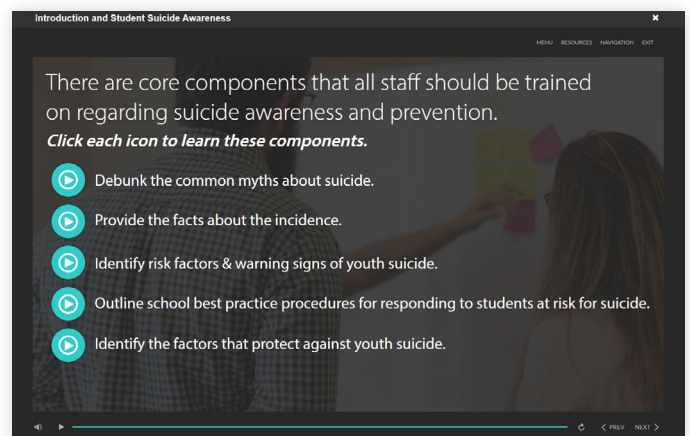
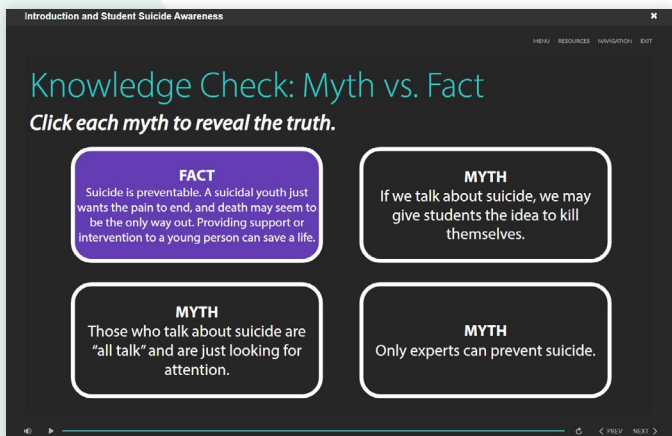
Area of Expertise
Youth Suicide Prevention

Find His Work Here

Behavioral Threat & Suicide Case Management platform
Suicide Awareness & Prevention Training

SUICIDE PREVENTION TRAINING

Because turning awareness into action requires a higher level of training we’ve partnered with Dr. Scott Poland, an international expert on youth suicide prevention to create a comprehensive suicide prevention training program for all school staff.



Discovering Concerning Behaviors

Identifying warning signs early is critical to preventing violence to self and others. Leading practices include putting tools and technology in place to enable various types of input ensuring early detection of concerning behaviors.

Pillar 3:

TIP REPORTING

Students are in the best position to identify and report concerning behaviors displayed by their classmates. Anonymous tip reporting provides a means of enabling students to share this critical information and prevent tragedies.

P3 School Tipline is a proven technology used in more than 30,000 schools nationwide.

9:24

P3 campus

Call 911 if this is an emergency.

Description of Concern/Event

Who is Involved?

First Name

Last Name

Grade

Gender

Race/Ethnicity

Twitter Handle

Team Communication Add Info

Team, I am including a summary page from Campus with contact information.

Kendall Rhea, Social Worker 2021/03/15 10:41 AM
Thank you Lisa! Damien, would you mind reaching out to this student's parents please? I think we need to schedule a mediation.

Damien Nelson, Assistant Principal 2021/03/15 10:43 AM
I have have notified parents and we are working to schedule a mediation for tomorrow morning. I will confirm once everyone has been reached.

Lisa Holien, School Psychologist 2021/03/15 10:47 AM
I have concluded my communication with the tipster. They verified they have their access code for future communication.

Enter notes into the text box at the bottom of this window and click 'Send to Team'.

Enter Team Communication Here

Send to Team

Two Way Dialog - Reporting Party Chat Window

P3 Campus 2021/3/15 10:30 AM
Thank you for sharing your concern with us. Are you in a place where we can continue talking online?

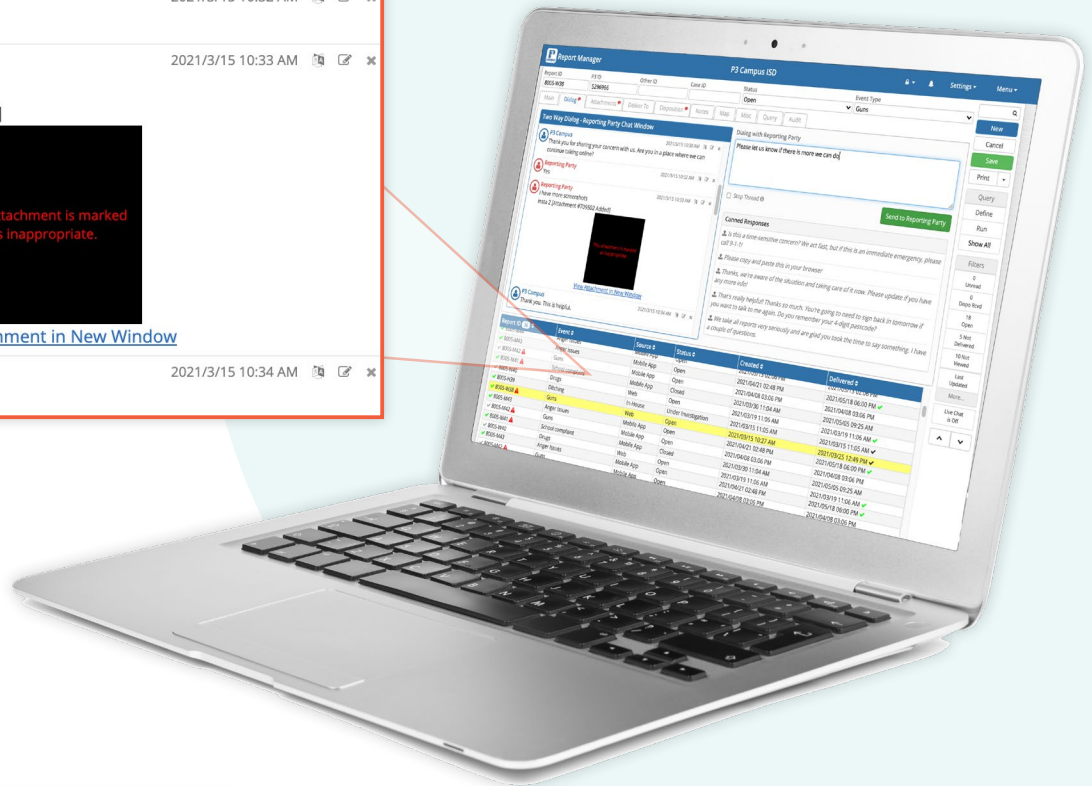
Reporting Party 2021/3/15 10:32 AM
Yes

Reporting Party 2021/3/15 10:33 AM
I have more screenshots
insta 2 [Attachment #709502 Added]

This attachment is marked as inappropriate.

[View Attachment in New Window](#)

P3 Campus 2021/3/15 10:34 AM
Thank you. This is helpful.



You 9:16 AM
This is anonymous right? I don't want them to know I said anything.

P3 Campus 9:21 AM
This app is totally anonymous, so don't worry! We don't know who you are and won't ask you to identify yourself. Thank you so much for speaking out. Do you know anyone else who may have seen these two students taking the golf cart and can confirm your account?

You 9:23 AM
I think their girlfriends were there trying to talk them out of it, but I'm not sure.

You can add additional information by entering a message here and clicking Submit.

Attach File **Submit**

[Logout](#)

- + Offers anonymous 2-way dialogue with the tipster.
- + Provides administrators and designated law enforcement officials with an intuitive interface to manage and share tips in real-time.
- + Allows your multidisciplinary threat assessment teams to coordinate efforts ensuring nothing slips through the cracks.

Note: P3 School Tipline integrates directly to the Behavioral Threat & Suicide Case Management software, speeding the process and facilitating documentation of all tips.

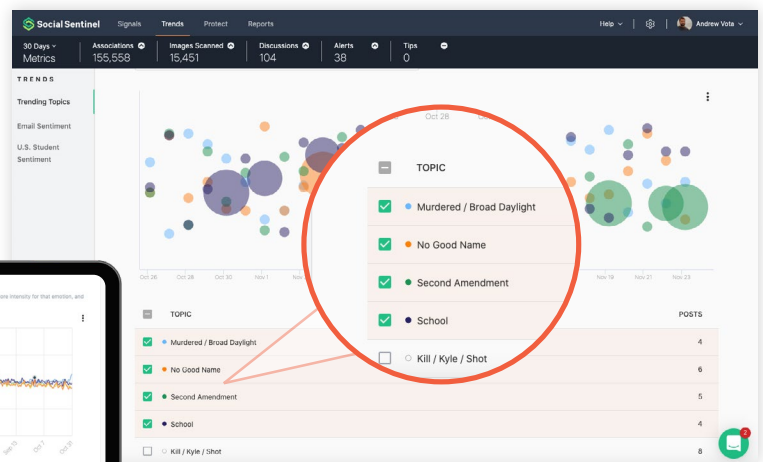
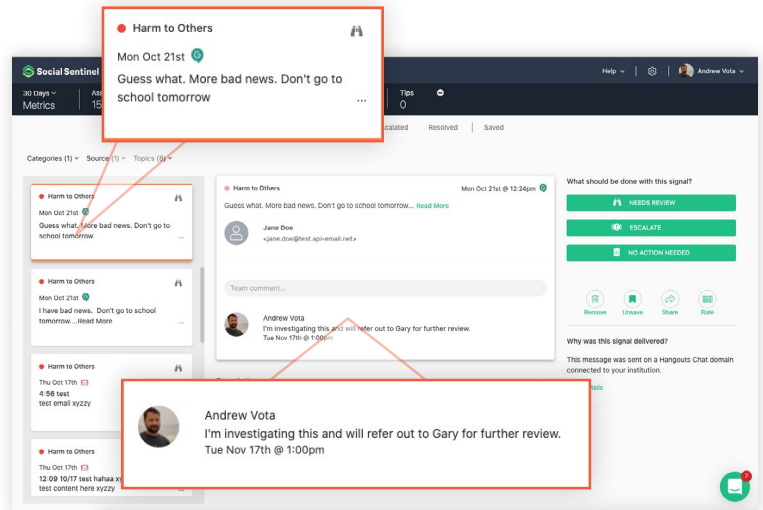
Pillar 4:

DETECT DIGITAL WARNING SIGNS

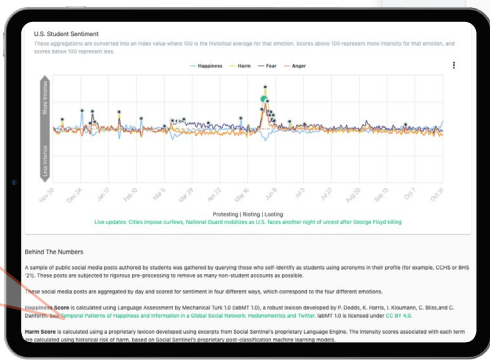
- Leakage is a type of warning behavior that may signal the ideation, planning or preparation of suicide or harm to others.
- Leakage is the communication to a third party of an intent to harm.
- Leakage occurs in nearly all cases of violence to self or others.

Navigate360 Detect digital scanning technology uses an artificial intelligence (AI) engine designed and managed by expert data science and linguistic teams to parse billions of digital conversations occurring in real-time across social media and your district-owned email domains alerting you to concerning content.

- + Reports provide the information necessary to get ahead of harmful intent before it escalates.
- + Alerts are delivered only when potentially harmful content is matched across multiple points accounting for images, context and syntax.
- + Ethically responsible AI engine is routinely audited ensuring proper and confidential delivery of reports only to appropriate team members.
- + Strictly adheres to all applicable laws, such as HIPPA, FERPA, CCPA and social media platform agreements, including protecting privacy even at the cost of model accuracy.



A sample of public social media posts (21). These posts are subjected to rigorous processing. These social media posts are aggregated by day and scored for sentiment in four different ways, which correspond to the four different emotions. Happiness Score is calculated using Language As Danforth. See Temporal Patterns of Happiness and Harm Score is calculated using a proprietary lexicon are calculated using historical risk of harm, based on Fear and Anger Scores are calculated using the Em mechanism for scoring many emotions rather than These aggregations are converted into an index below 100 represent less. Topics are extracted using



Leverage Technology to Support Your Teams

When your team is prepared and trained on a unified threat assessment methodology, they are better equipped to respond and initiate assessments around concerning student behaviors. Having software in place to support your threat assessment teams can streamline the process to support the team and help guide students to a safer path.

Pillar 5

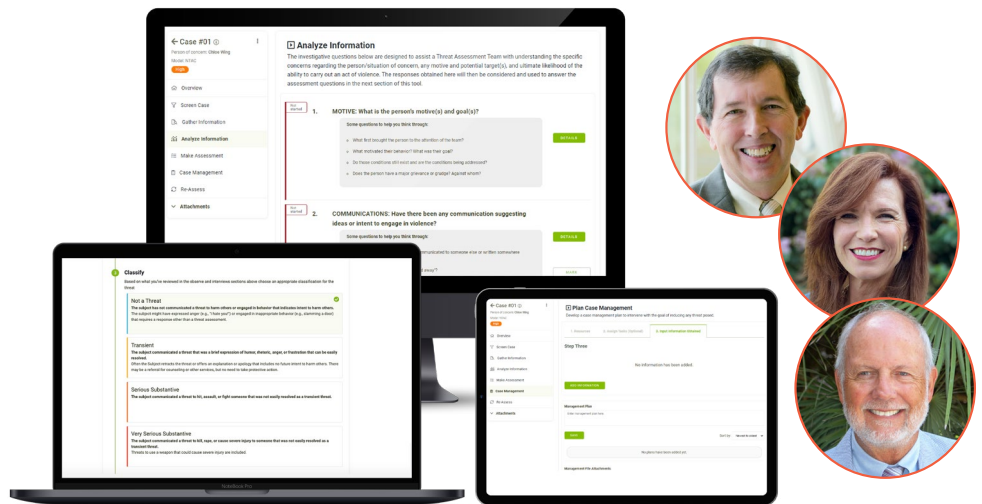
COMPREHENSIVE BEHAVIORAL THREAT & SUICIDE CASE MANAGEMENT

Navigate360's Behavioral Threat & Suicide Case Management platform is all-encompassing violence prevention technology. The strategies and models developed by world-renown experts are embedded for high-fidelity assessments throughout your district.

The case management technology enables you to demonstrate that your teams consistently follow a proven violence prevention process protecting your school from liabilities associated with acts of student violence.

Empower Your Teams

- + Technology takes care of the administrative components so your team can follow the process and focus on the student.
- + Built-in, expert guidance is robust and customizable so you can easily add specific guidance for your district or state. Teams are always in-the-know and confident in their actions.
- + Gather information and see it all together in one secure, central location.



Behavioral Threat & Suicide Case Management give your teams a clear picture to more accurately assess the situation and provide the right type of help and support for the student.

About Navigate360

Navigate360 empowers people, schools and communities to stay safe and thrive – physically, socially and emotionally.

The Industry's Best Modern Practices

Navigate360 is the leader in holistic safety and wellness solutions. Our revolutionary model spans the full spectrum of safety, including threat detection and prevention, mental health and wellness, and safety management and preparedness – backed by research and developed by industry experts. We provide the tools necessary to save and enhance lives.

”

Of all the school safety technology out there, the Navigate360 products are among the best of the best. From the way they prepare us for emergency situations to the assurance they deliver in relation to crisis response, they are simply invaluable.”

—Edward Vittardi,
St. Albert the Great School

Why Navigate360?

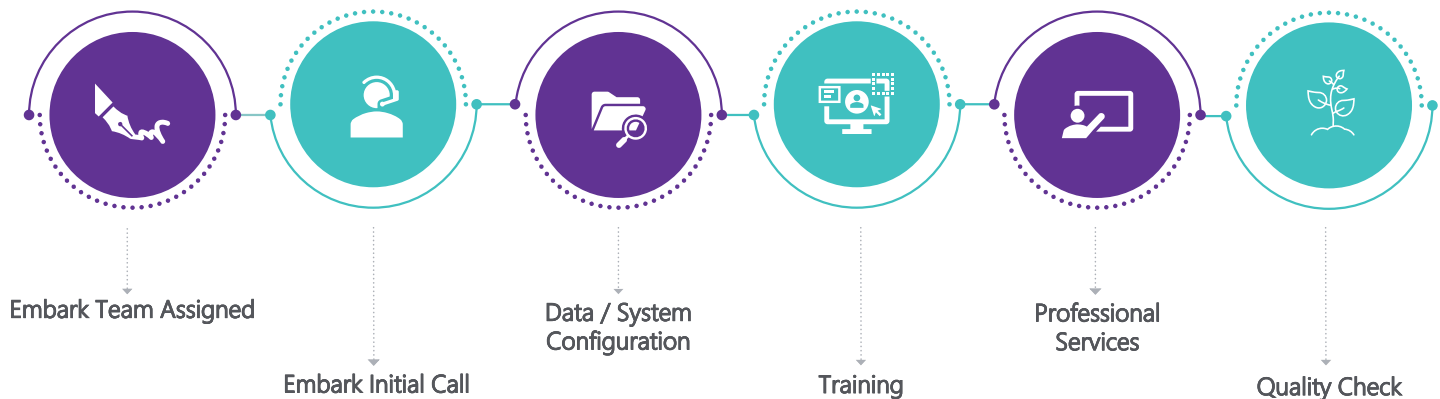
- + Complete threat detection and prevention suite helping districts move from awareness to action.
- + Evidence-based solutions developed with leading industry experts provide confidence and peace of mind.
- + Navigate360 is a full-spectrum school safety solution provider with the experience and expertise to support all your school safety initiatives.

Learn more online
at Navigate360.com

Schedule a Consultation
at Navigate360.com/tdp

Call US 330-661-0106

Embark™ Journey



Our customers come first with our onboarding, implementation, and customer service process – Navigate360 Embark™. Our Navigate360 Embark™ process guides our customers through your initial configuration and training journey to your ongoing engagement with us as your partner in safety.

We assign dedicated teams to support each project for successful solution implementation and onboarding through customer support and ongoing services. Each team consists of professional Implementation Consultants, Support Representatives, and Customer Success Managers. Through the Embark™ Journey, team members manage the entire process from project initiation through ongoing support and services for you.

1 Mental Health America. (2020). (rep.). *Spotlight 2021 - COVID-19 and Mental Health: A Growing Crisis*. Retrieved October 29, 2021, from <https://mhanational.org/research-reports/covid-19-and-mental-health-growing-crisis>.

2 Centers for Disease Control, 2020

3 Reinert, M, Fritze, D. & Nguyen, T. (October 2021). "The State of Mental Health in America 2022" Mental Health America, Alexandria VA

4 Graf, N. (2018, April 18). A majority of U.S. teens fear a shooting could happen at their school, and most parents share their concern. Pew Research Center. Retrieved October 29, 2021, from [https://www.pewresearch.org/fact-tank/2018/04/18/a-majority-](https://www.pewresearch.org/fact-tank/2018/04/18/a-majority-of-u-s-teens-fear-a-shooting-could-happen-at-their-school-and-most-parents-share-their-concern/)

[of-u-s-teens-fear-a-shooting-could-happen-at-their-school-and-most-parents-share-their-concern/](#).

5 National Threat Assessment Center. (2018). *Enhancing school safety using a threat assessment model: An operational guide for preventing targeted school violence*. U.S. Secret Service. Department of Homeland Security.

6 National Association of School Psychologists. (2015). *Preventing Youth Suicide: Tips for Parents & Educators*. NASP. Retrieved October 29, 2021, from <https://www.nasponline.org/resources-and-publications/resources-and-podcasts/school-safety-and-crisis/mental-health-resources/preventing-youth-suicide/preventing-youth-suicide-tips-for-parents-and-educators>.



Navigate360

Building safer tomorrows.



CONTACT US



Call

(330) 661-0106



Email

info@navigate360.com
navigate360.com



Address

3900 Kinross Lakes Pkwy, 2nd Floor,
Richfield, OH 44286